



Building a Basic Web Page with Netscape Composer

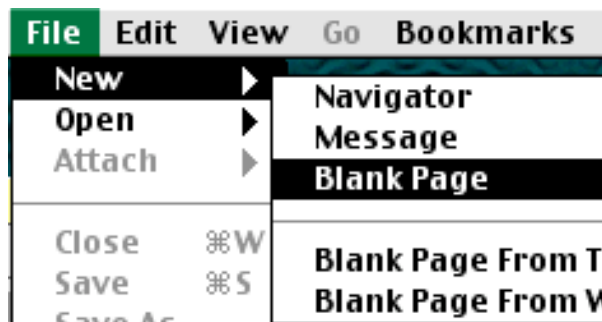


Netscape Communicator™

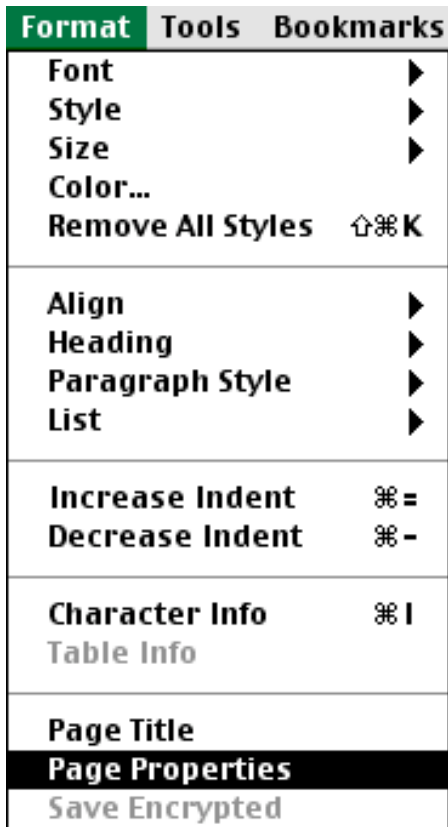
1.) Begin by double-clicking on the **Netscape** icon to open the application. Close whatever splash page comes up (the nice thing about **Composer** is that you don't have to be hooked to the internet to create with it or check how your page looks on navigator.).



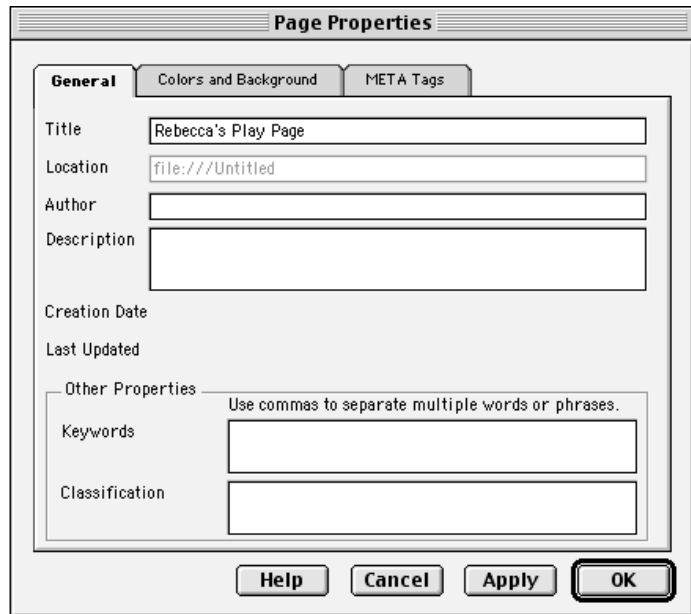
2.) From the menu bar (above) select **File—New—Blank Page**.



3.) As soon as the blank page is open, select **Format—Page Properties**.

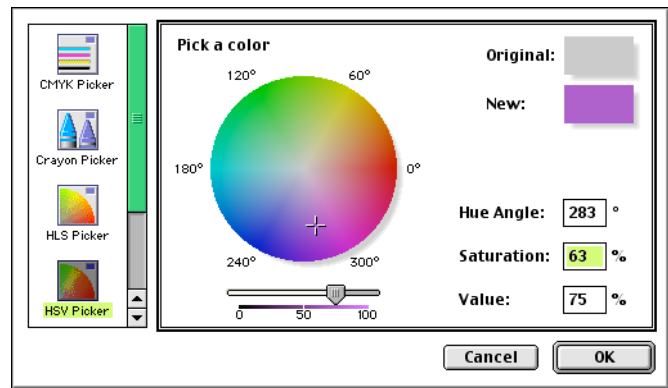
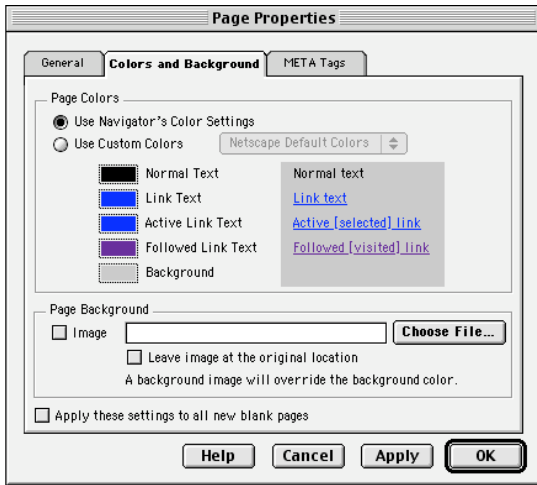


4.) This will open a dialog box that will allow you to name the document . . .

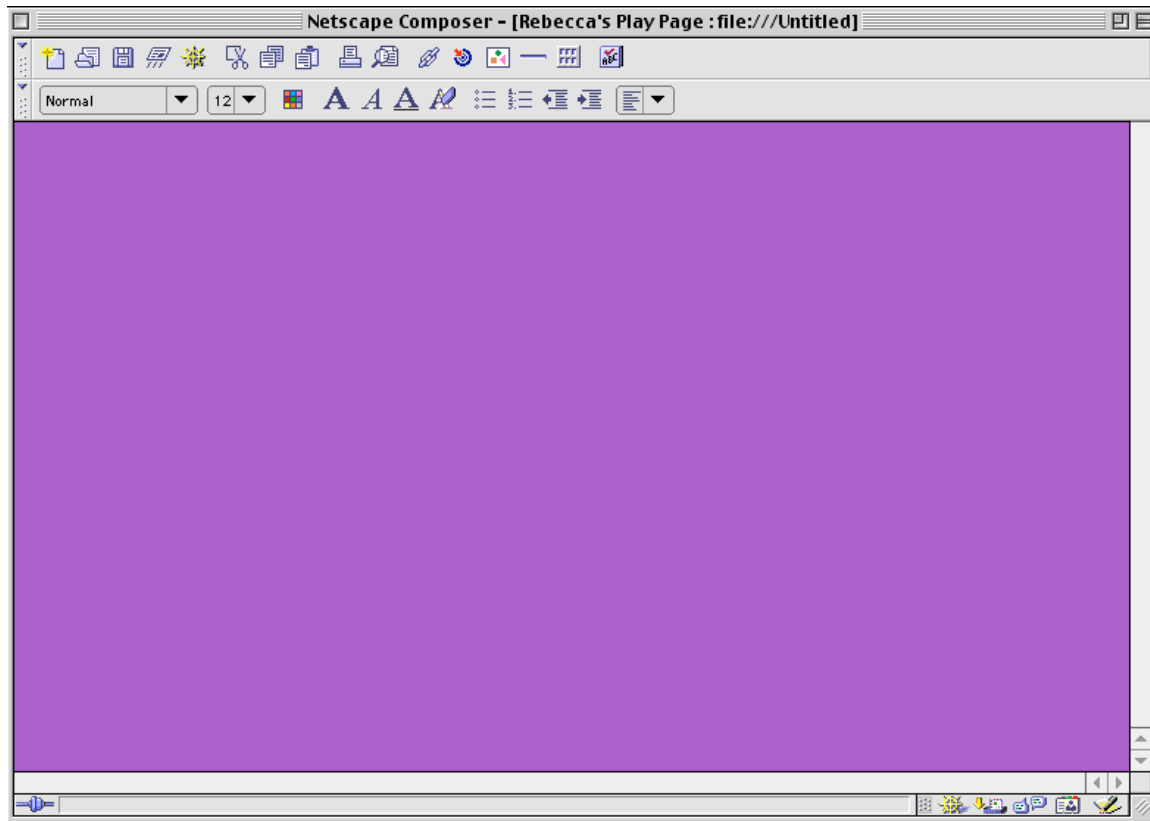


. . . and, by clicking on the **Colors and Background** tab, select the background color, or even a background image if you have one you'd like to use.

5.) to select a background color, click on Use **Custom Colors** and then on the square next to **Background**. A color wheel will appear. Select your background color by simply clicking on the color/shade you want (hint: keep it a color that black text will show clearly on for now.).



6.) Once you have the color you want, click **OK** in the color wheel box. Click **Apply** in **Page Properties**. Repeat until you are satisfied with the color, then click **OK** and you will have a blank page of the color you want:



Now you have your canvas, your palette of menu items, and you can “paint” whatever picture of yourself you like.