

Downloading Elevation, Land Cover and Hydrography Data

Prepared by
Venkatesh Merwade
School of Civil Engineering, Purdue University
vmerwade@purdue.edu

August 2012

Purpose

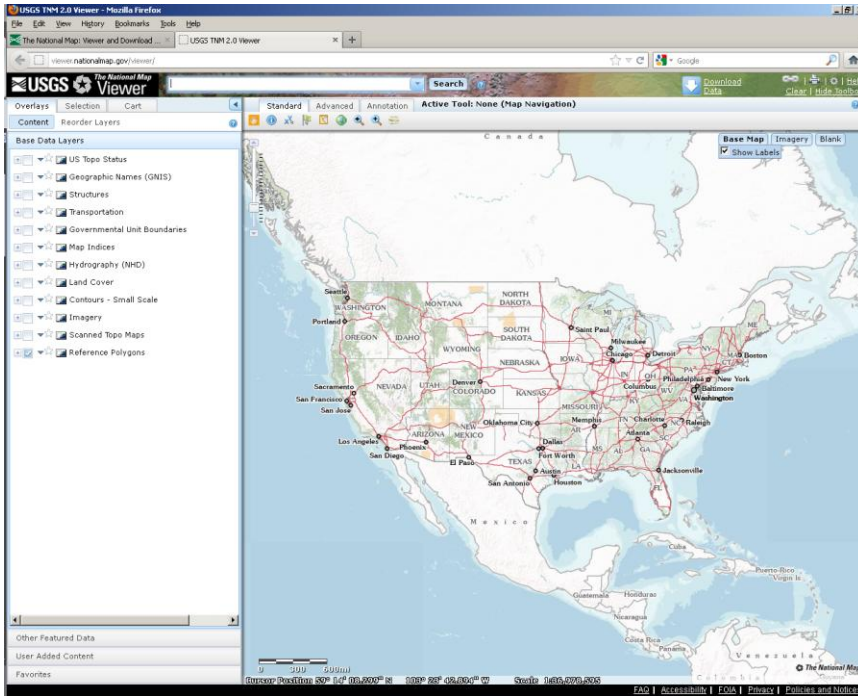
The purpose of this exercise to demonstrate the steps involved in downloading the elevation, land cover and hydrography data from the United States Geological Survey (USGS) National Map viewer.

Downloading Data

Elevation and land cover data can be downloaded from the USGS National Map <http://nationalmap.gov/viewer.html>.





On the National Map, click on The National Map Viewer and Download Platform button. On the National Map Viewer and Download Platform click on Viewer hyperlink on the right hand side to see the viewer as shown below.

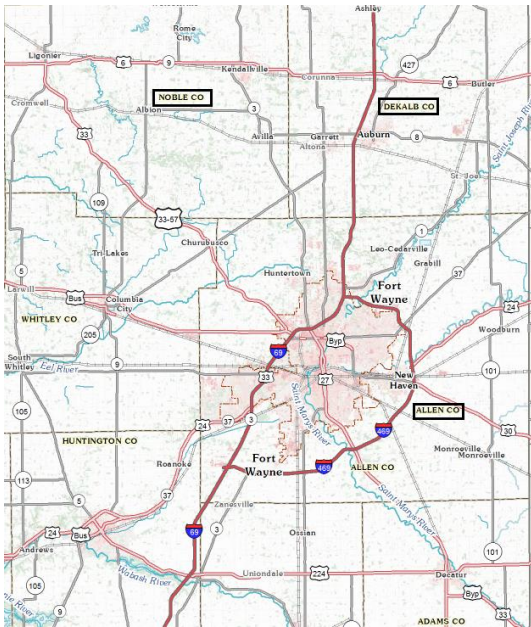


Our goal in this exercise is to download data covering Cedar Creek watershed, which overlaps with Noble, Allen and De Kalb counties in Indiana as shown below.



On the viewer toolbar, use the zoom-in button  to zoom the area in north east Indiana to see the area including Noble, Allen and De Kalb counties as shown below. You may

have to use a combination of pan , zoom to last extent  and zoom-in buttons to get to the area you want.



Once you are satisfied with the extent, you can click on the Download Data button on the



top, and then use the “click here” button to download data by the current map extent. In the available data window, check Hydrography (Personal GDB 9.2), Land Cover (ArcGrid) and Elevation (ArcGrid), and click Next.

| | |
|---|--------------------|
| <input checked="" type="checkbox"/> Hydrography | Personal GDB 9.2 ▼ |
| <input checked="" type="checkbox"/> Land Cover | ArcGrid ▼ |
| <input checked="" type="checkbox"/> Elevation | ArcGrid ▼ |
| <input type="checkbox"/> Orthoimagery | GeoTIFF ▼ |

If a checkbox is disabled, the area you selected is too large. Click theme names to see theme descriptions.



For each data layer, various products are available. In this case, Land Cover has six products, Elevation has ten products, and Hydrography has 5 products. For Land Cover check National Land Cover Database 2006 (NLCD 2006).

| | | | | | | | |
|-------------------------------------|--|-------------|-------------|------------|----|--------|--|
| <input type="checkbox"/> | Database 2006 - Impervious Surface | Best Availa | Best Availa | Land Cover | 30 | Meters | |
| <input checked="" type="checkbox"/> | National Land Cover Database 2006 - Land Cover | Best Availa | Best Availa | Land Cover | 30 | Meters | |
| Elevation (10 products) | | | | | | | |
| Hydrography (5 products) | | | | | | | |

For elevation, select NED (1 arc second) Pre-packaged ArcGrid format.

| | | | | | | | |
|-------------------------------------|---|-------------|-------------|------------|------------|---------|--|
| <input type="checkbox"/> | arc second) Pre-packaged Float format | Best Availa | Best Availa | Elevati1 | arc second | Staged | |
| <input checked="" type="checkbox"/> | National Elevation Dataset (1 arc second) Pre-packaged ArcGrid format | Best Availa | Best Availa | Elevati1 | arc second | Staged | |
| <input type="checkbox"/> | National Elevation Dataset (1/3 arc second) | Best Availa | Best Availa | Elevati1/3 | arc second | Dynamic | |

For Hydrography, select Staged Subregion 0410 (Western Lake Erie), and click Next.

| Hydrography (5 products) | | | | | | |
|-------------------------------------|--|------|--------|---------|----------|----------|
| | Product | Date | Ty ▼ | Resolur | Size | Metadata |
| <input checked="" type="checkbox"/> | Staged Subregion 0410 (Western Lake Erie) | 2012 | Staged | High | 35.91 MB | |
| <input type="checkbox"/> | Staged Subregion 0405 (Southeastern Lake Michigan) | 2012 | Staged | High | 27.88 MB | |

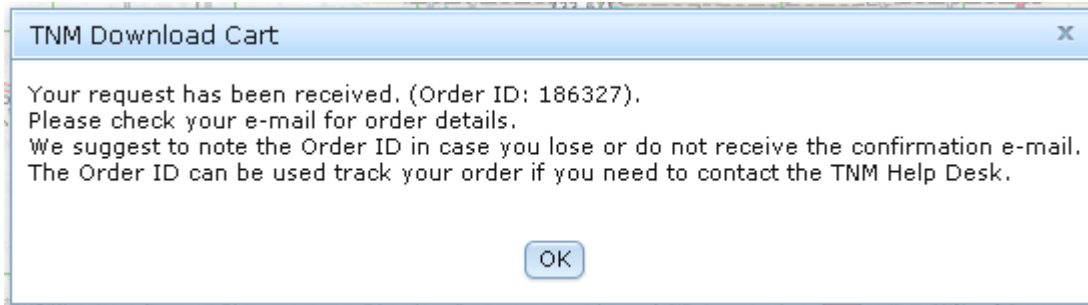
After you click the Next button, all selected data will be added to a Cart, and you will see it on the left hand side of the screen. If the data in the cart looks OK, click the Checkout button, and then provide your email address, and click the Place Order button as shown below.

Cart

Please enter your e-mail address below. You will receive a message containing links to download the data you selected.

E-mail address:

Re-enter e-mail address:



OK. You are done!